

Proposal for the Thuoux section as a candidate for the GSSP of the base of the Oxfordian stage

Dominique FORTWENGLER ¹*

Didier MARCHAND ²*

Alain BONNOT ³*

Rémi JARDAT ⁴

Daniel RAYNAUD ⁵

Abstract: The Thuoux section, located in South-Eastern Basin of France (coordinates: 44°30'55"E; 5°42'25"N), is a section that satisfies numerous demanding criteria as reference section (GSSP) for the base of the Oxfordian stage. Sedimentation was continuous in that the abundant ammonitic fauna yields no detectable hiatuses. The stratigraphic boundary is located between the Lamberti Zone and the Mariae Zone or more precisely between the Paucicostatum horizon (MARCHAND, 1979) and the Thuouxensis horizon (FORTWENGLER & MARCHAND, 1994a). In this section, there is a perfect mixing between Boreal ammonites (Cardioceratinae) whose species are used as stratigraphic markers and Sub-mediterranean/Subboreal ammonites (Hecticoceratinae, Peltoceratinae and Perisphinctinae) that provide further possibilities for wide correlation of this boundary. Finally, parallel ammonite zonations have been established with great precision (biohorizons and sometimes "sub-biohorizons") in various areas of France, with different palaeoenvironments. The Thuoux section permits correlations with central and eastern Europe as well as North America, based on Cardioceratinae successions, and with South America, using Peltoceratinae. Thickness of the Callovian-Oxfordian transitional beds in the Thuoux section has allowed detailed sedimentological studies and astronomical calibration of the Lower Oxfordian (BOULILA, 2008; BOULILA *et al.*, 2008). The Thuoux section is located at the centre of a set of more than thirty sections where the base of the Oxfordian stage is visible (FORTWENGLER, 1989; FORTWENGLER & MARCHAND, 1994a, b, c, d).

Key Words: Ammonites; upper Callovian; lower Oxfordian; GSSP Oxfordian.

Citation: FORTWENGLER D., MARCHAND D., BONNOT A., JARDAT R. & RAYNAUD D. (2012).- Proposal for the Thuoux section as a candidate for the GSSP of the base of the Oxfordian stage.- *Carnets de Géologie [Notebooks on Geology]*, Brest, Article 2012/06 (CG2012_A06), p. 117-136.

Résumé : *Proposition de candidature de la coupe de Thuoux (France) pour le GSSP de la base de l'étage Oxfordien.*- La coupe de Thuoux, localisée en France dans le Bassin du Sud-Est, (coordonnées : 44°30'55"E; 5°42'25"N) satisfait à la majorité des critères demandés pour devenir le GSSP de la base de l'étage Oxfordien. La sédimentation est continue à l'échelle de l'horizon ammonitique et en particulier des horizons à Paucicostatum (MARCHAND, 1979) et à Thuouxensis (FORTWENGLER & MARCHAND, 1994a). Dans cette coupe, il y a un mélange constant entre les ammonites boréales (Cardioceratinae) et les ammonites subboréales et sub-méditerranéennes (Hecticoceratinae, Peltoceratinae et Perisphinctinae) ce qui autorise de larges corrélations géographiques. De plus, la présence simulta-

¹ Le clos des Vignes, F-26160 La Begude de Mazenc (France)
dominique.fortwengler@wanadoo.fr

² 8a, avenue Ste Claire, F-06100 Nice (France)
didoux.marchand@gmail.fr

³ 12, rue des Vergers, F-21121 Hauteville-les-Dijon (France)
abonnot@wanadoo.fr

⁴ 29, rue Sainte Colombe, F-94800 Villejuif (France)
remi.jardat@orange.fr

⁵ 7, rue Albert I^{er}, F-94120 Fontenay-sous-Bois (France)
od.raynaud@wanadoo.fr

* Chercheurs libres au Centre des Sciences de la Terre, Université de Bourgogne, 6 boulevard Gabriel, 21000 Dijon (France)

Manuscript online since 14 July 2012

[Editor: Bruno GRANIER; copy editor: Christian C. EMIG; language editor: Stephen CAREY]

née de ces 4 sous-familles permet un découpage temporel très précis et permet aussi de proposer des corrélations temporelles entre l'Europe Occidentale, le nord de l'Amérique (grâce aux *Cardioceratinae*) et l'Amérique du Sud (grâce aux *Peltoceratinae*). La forte épaisseur des sédiments à Thuoux a aussi permis des études sédimentologiques et une calibration astronomique de l'Oxfordien inférieur (BOULILA, 2008 ; BOULILA *et al.*, 2008). Enfin, plus d'une trentaine de coupes ont été analysées en détail autour de Thuoux, ce qui augmente la fiabilité des résultats obtenus sur la coupe où la base de l'Oxfordien est visible (FORTWENGLER, 1989 ; FORTWENGLER & MARCHAND, 1994a, b, c, d).

Mots-Clefs : Ammonites ; Callovien supérieur ; Oxfordien inférieur ; GSSP Oxfordien.

1. Introduction

The Thuoux and Savournon sections were proposed as candidates for Global Boundary Stratotype Section and Point (GSSP) of the Oxfordian Stage more than 15 years ago (FORTWENGLER & MARCHAND, 1994a, b, c, d). Both these sections were assessed as excellent inasmuch as in 1996 (in MELÉNDEZ) a vote by Oxfordian Working Group yielded the following results:

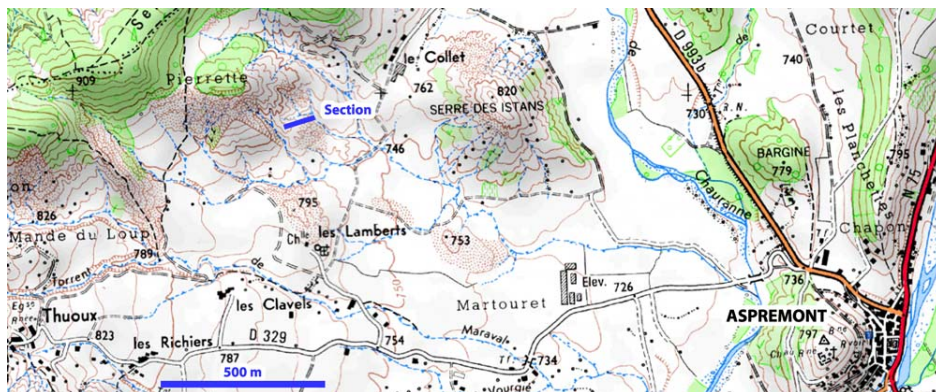
- Thuoux - Savournon (France) - 24 votes
- Redcliff Point (England) - 5 votes
- another locality to be studied - 1 vote

Subsequently, we have focused our efforts on the Thuoux section which is located about 600m N-E from Thuoux (close to Aspremont and Saint-Pierre-d'Argençon), 5km west of Aspres and 7km north of Serres (Département des Hautes-Alpes, France). Coordinates: 44°30'55"E; 5°42'25"N (Figs. 1- 2).

The Thuoux section, in contrast to Savournon, is not disturbed by faults and provides rea-

dier recognition of the units described below. Moreover, the gentler slope of the Thuoux section precludes strong mixing of faunas as well as pollution of the section by elements coming from the upper layers.

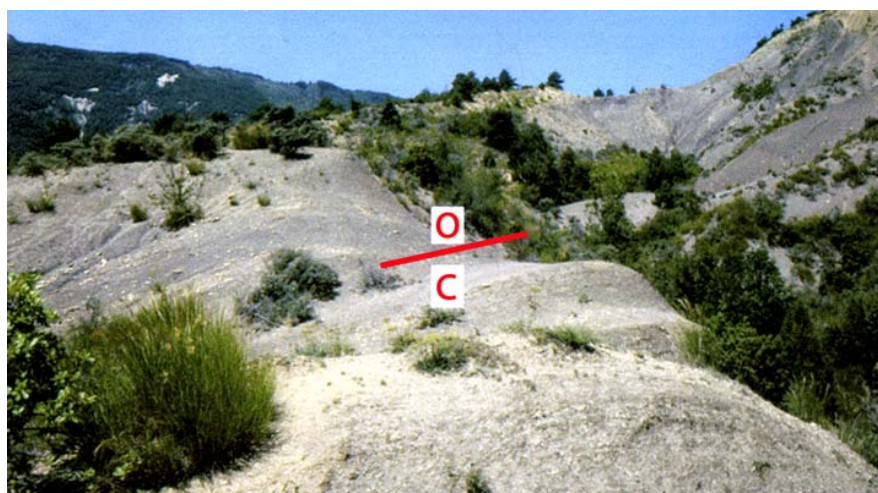
MELÉNDEZ (2004, 2006) expressed doubts about choosing Thuoux "because of preservation of ammonites as pyritic nuclei" or "the poor state of preservation of ammonites, as small pyritic nuclei, making them difficult to interpret". As a consequence, in the table p. 18 of MELÉNDEZ (2006), ammonites from Redcliff are assessed (5) against Thuoux (1). This is surprising as Thuoux and Savournon ammonites are preserved in a virtually identical way (FORTWENGLER & MARCHAND, 1994c, d). At both Thuoux and Savournon, the fossils are carbonate internal moulds corresponding either to the phragmocone alone, or including part or all of the body chamber. Never are the ammonites pyritic. In both sections, the average diameter of ammonites is about 5 cm.

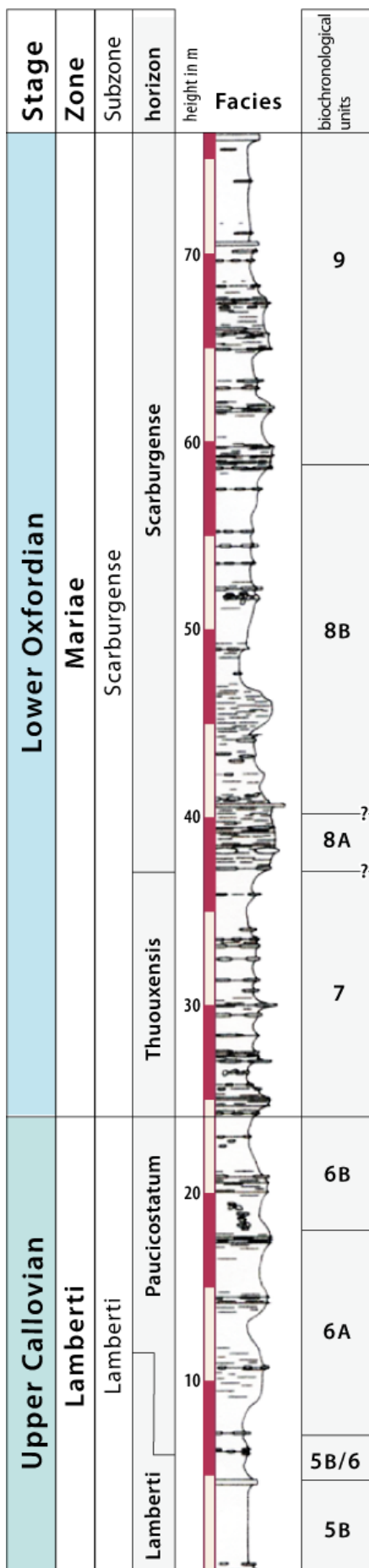


◀ **Figure 1:** Location of the Thuoux section proposed as GSSP Oxfordian.

© www.geoportail.fr & IGN - Institut Géographique National, 73 avenue de Paris, F-94165 Saint-Mandé Cedex (France)

▶ **Figure 2:** The Thuoux section with the position of the Callovian / Oxfordian boundary (C: Callovian and O: Oxfordian).





◀ **Figure 3:** Log (after Emilia HURET) and biostratigraphy (D. FORTWENGLER and D. MARCHAND) of the "Thuoux" section.

2. Description of the Thuoux section proposed as the GSSP of Oxfordian stage

In the South-Eastern Basin of France a very thick marly limestone series bearing white and carbonate nodules crops out. The succession is known under the name of "Terres Noires", a term which also denotes its facies. This unit ranges from upper Bajocian to middle Oxfordian (Antecedens Subzone). At the Thuoux section, the stratigraphic interval from the upper Callovian (Lamberti Zone, Lamberti Subzone) to the lower Oxfordian (Mariae Zone, uppermost Praecordatum Subzone) is well preserved and almost 200m in thickness (Fig. 3).

This study was initiated by FORTWENGLER during the 1980s, resulting in 1989 in the first publication in which detailed subdivision of this section was established. That biostratigraphical framework was later updated (FORTWENGLER & MARCHAND, 1994a; FORTWENGLER *et al.*, 1997) and officially accepted by the *Groupe Français d'Étude du Jurassique* (CARIOLU *et al.*, 1997). At present, it is accepted by all Western European colleagues and notably by CHAPMAN in Weymouth (1996, 1997, 1999) and JARDAT (2010) in the French Jura. After more than 25 years' research, the Callovian/Oxfordian transition has been observed in the South-Eastern Basin in 61 sections (Fig. 4), and in thirty of them exhaustive *in situ* collection of ammonites has been carried out, in order to determine precisely the limits of every horizon to analyse the ammonite populations (FORTWENGLER, 1989; MARCHAND *et al.*, 1990; FORTWENGLER *et al.*, 1997). More than 5,000 ammonites were collected close to the upper Callovian/lower Oxfordian boundary. It is particularly important to note that in all these collections, from all levels, Phylloceratidae and especially *Sowerbyceras*, are always present and abundant.

At the levels 5B, 6A-6B, 7 and 8A (field numbers) which correspond to the Callovian/Oxfordian transition (FORTWENGLER, 1989), ammonitids are more abundant than phylloceratids, whereas from levels 8B/9 (uppermost Scarburgense biohorizon and lowermost Woodhamense biohorizon) we record the reverse. The latter is interpreted as due to the occurrence of extensional tectonics correlated with deeper

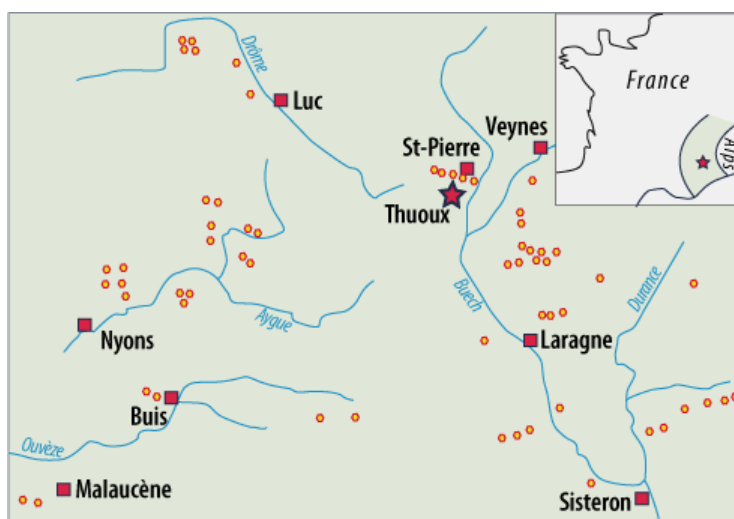


Figure 4: Locality map of the 61 outcrops in the "Terres Noires" Formation of the Southern-Eastern Basin of France where the Callovian-Oxfordian boundary is recognized.

ning and so with increase of phylloceratids. This phenomenon is known from numerous regions of Western Europe (MARCHAND, 1986).

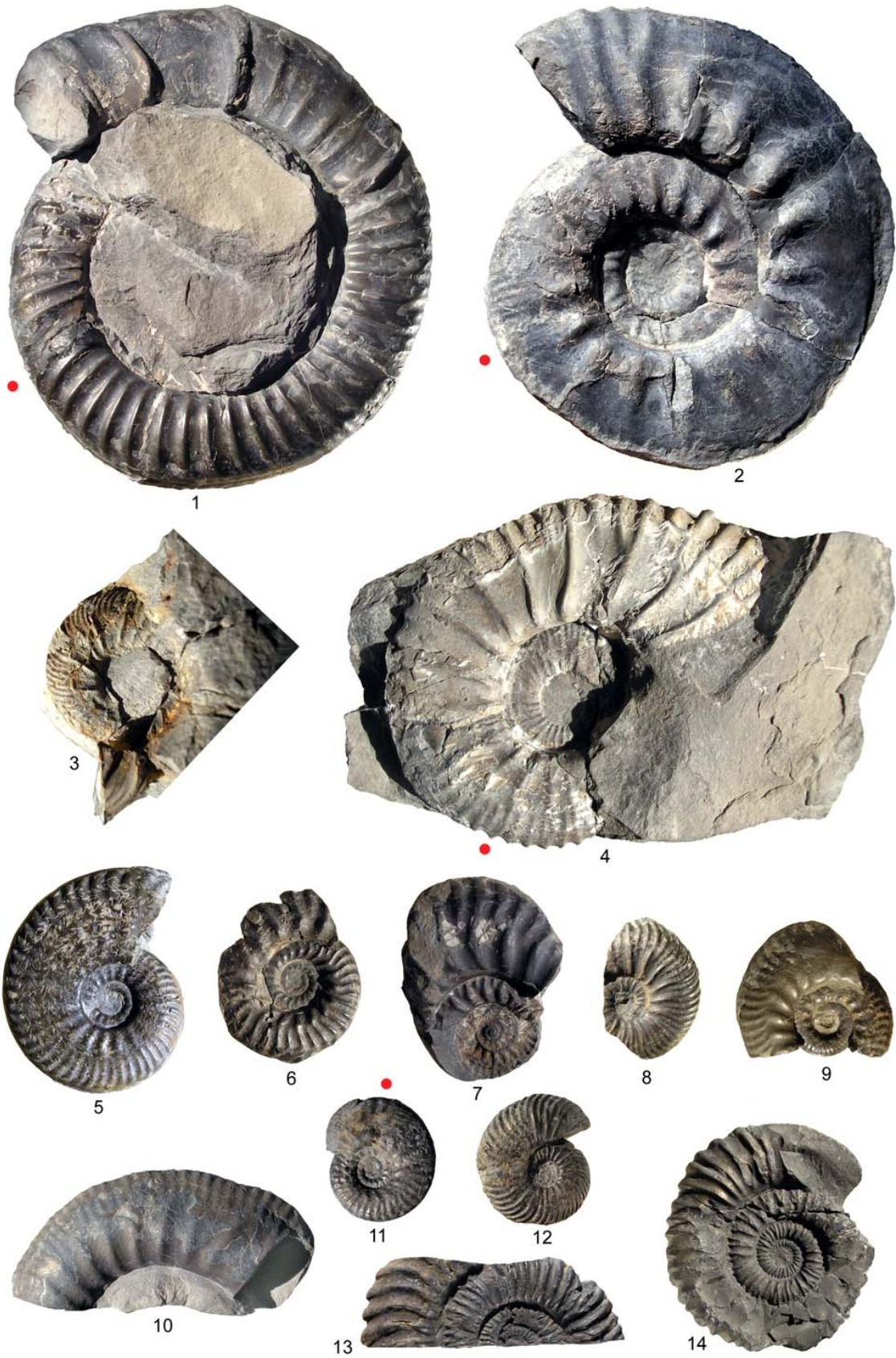
Faunal comparisons were effected between the Boreal and Tethyan provinces, thanks to very precise collections made on the Isle of Skye (TURNER, 1963; SYKES, 1975; MORTON & HUDSON, 1995) and around Nice (DARDEAU & MARCHAND, 1979), and in between in Yorkshire, Dorset, the margins and centre of Paris Basin (*Agence nationale pour la gestion des déchets radioactifs*, ANDRA drillings), the Jura, the South-Eastern Basin of France, and several European countries (Germany, Bulgaria, Poland and Rumania with the help of colleagues in these countries).

Among all the Western European sections (see references), the Thuoux section is clearly the most accessible, the most interesting and the most reliable. It begins with upper Callovian (Lamberti Zone) and ends with lower Oxfordian (slightly below the Mariae Zone/Cordatum Zone boundary) deposits. This stratigraphic interval is continuous and, quite rarely for the "Terres Noires", free of faults. Moreover, sedimentary layers are sub-vertical, which makes thickness measurements easy. The occurrence of thin, slightly more carbonate-rich levels leads, through differential erosion, to smooth recesses between carbonate-rich intervals, which facilitates the collecting of ammonites *in situ*. There are also reddish carbonate intervals and concentrations of aligned grey to ochre nodules that constitute highly visible and very reliable markers. In these sections, ammonites are frequent, and commonly of greater size than in Saviournon, with shell diameter above 10 cm. Counts made by D.F. and D.M. on their collections from Thuoux are as follows (FORTWENGLER & MARCHAND, 1994d):

- Level 5B (Lamberti horizon): n = 98
- Level 6A (lower part of Paucicostatum horizon): n = 148
- Level 6B (upper part of Paucicostatum horizon): n = 156
- Level 7A (lower part of Thuouxensis horizon): n = 175
- Level 7B (upper part of Thuouxensis horizon): n = 30
- Level 8A (lower part of Scarburgense horizon): n = 345
- Level 8B (lower part of Scarburgense horizon): n = 172
- Level 9 (upper Scarburgense / lower Woodhamense horizon): ammonites are rare.

Collected macro-invertebrates are low in diversity as ammonites frequently reach 100% of the macrofauna. Other cephalopods are present but belemnite rostra and rhyncholithes are scarce, and nautilids extremely rare. Bivalves are not frequent although sometimes they are concentrated inside ammonite body chambers (levels 7B and 9). Brachiopods and echinoderms are totally absent at Thuoux. And what is true at Thuoux is true within all the "Terres Noires" of the Dauphinois Basin.

► **Plate 1: 1.** *Alligaticeras* aff. *alligatum* (LECKENBY) (M). Level 5B, Lamberti Zone, Lamberti Subzone, Lamberti horizon, n° DF 1741: Thuoux. **2.** *Poculisphinctes poculum* (LECKENBY) (M). Level 5B, Lamberti Zone, Lamberti Subzone, Lamberti horizon, n° DF 4588: Thuoux. **3.** *Quenstedtoceras lamberti* (SOWERBY) (M). Level 5B, Lamberti Zone, Lamberti Subzone, Lamberti horizon, n° DF 2584: Thuoux. **4.** *Kosmoceras duncani* (SOWERBY) in BADALUTA, 1976 (fig. 6-2) (M). Level 5B, Lamberti Zone, Lamberti Subzone, Lamberti horizon, n° DF 18698: Thuoux. **5.** *Hecticoceras (Orbignyceras) paulowi* (de TSYTOVITCH) (M). Level 5B, Lamberti Zone, Lamberti Subzone, Lamberti horizon, n° DF 2467: Thuoux. **6.** *Hecticoceras (Putealicerias) punctatum* LAHUSEN (m). Level 6A, Lamberti Zone, Lamberti Subzone, Paucicostatum horizon, n° DF 1376: Thuoux. **7.** *Hecticoceras (Putealicerias) punctatum* LAHUSEN (M). Level 6A, Lamberti Zone, Lamberti Subzone, Paucicostatum horizon, n° DF 2503: Thuoux. **8.** *Cardioceras paucicostatum* LANGE (M ?). Level 6A, Lamberti Zone, Lamberti Subzone, Paucicostatum horizon, n° DF 2469: Thuoux. **9.** *Hecticoceras (Lunuloceras) pseudopunctatum* LAHUSEN (M ?). Level 6A, Lamberti Zone, Lamberti Subzone, Paucicostatum horizon, n° DF 2482: Thuoux. **10.** *Poculisphinctes* sp. aff. *Poculum* (LECKENBY) (m). Level 6A, Lamberti Zone, Lamberti Subzone, Paucicostatum horizon, n° DF 18082: Thuoux. **11.** *Hecticoceras (Lunuloceras) pseudopunctatum* LAHUSEN (m). Level 6B, Lamberti Zone, Lamberti Subzone, Paucicostatum horizon, n° DF 2558: Thuoux. **12.** *Cardioceras* aff. *paucicostatum* LANGE (m ?). Level 6B, Lamberti Zone, Lamberti Subzone, Paucicostatum horizon, n° DF 2530, Thuoux. **13.** *Peltoceratoides eugenii* (RASPAIL) (m). Level 6B, Lamberti Zone, Lamberti Subzone, Paucicostatum horizon, n° DF 18098, Thuoux. **14.** *Peltoceratoides eugenii* (RASPAIL) (M). Level 6B, Lamberti Zone, Lamberti Subzone, Paucicostatum horizon, n° DF 2573: Thuoux. All specimens are from D. FORTWENGLER's collection. Photos: D. FORTWENGLER; preparation of plate: Simone DUTOUR. Red point: end of phragmocone.



1 cm

3. The Callovian-Oxfordian boundary and the fossil record (Figs. 4 - 5)

a. Ammonites (MARCHAND, 1979; FORTWENGLER & MARCHAND, 1994a, b, c, d)

Uppermost Callovian ammonites (Lamberti Zone, Lamberti Subzone, Lamberti and Paucicostatum biohorizons).

- Level 5A (at Thuoux: this level is poorly exposed).
At other places it always yields ammonites from Praelamberti biohorizon.
- Level 5B (at Thuoux: 8.50m thick).
The Lamberti biohorizon still yields Callovian genera that are recorded in 5A. *Quenstedtoceras* is now represented by *Q. lamberti* (SOWERBY) (Pl. 1: 3) and this is the level where we have found the youngest individual from the genus *Kosmoceras* (Pl. 1: 4) among quite numerous Pseudoperisphinctinae (Pl. 1: 2). Peltoceratinae are very scarce. We identify the earliest Perisphinctinae (*Alligaticeras* aff. *alligatum*) (Pl. 1: 1) with "Oxfordian morphology". Hecticeratinae are also present (Pl. 1: 5).
- Level 6 (at Thuoux: 16.8m thick).
The top part of the Lamberti Subzone (Levels 6A and 6B) corresponds to the Paucicostatum biohorizon (MARCHAND, 1979; FORTWENGLER & MARCHAND, 1994a) in which subfamily Cardioceratinae is represented by the rare latest *Quenstedtoceras lamberti* (SOWERBY) and the first *Cardioceras paucicostatum* LANGE (Pl. 1: 8, 12). In this species, the whorl section is acute-oval, primary ribs are more numerous and less heightened than in *Quenstedtoceras lamberti* (SOWERBY) and there are only one or two secondary ribs between two primaries (level 6A). *C. paucicostatum* is very easy to distinguish from *Q. lamberti* and clearly announces the later *Cardioceras scarburgense* (YOUNG & BIRD) species. That is the reason why we consider it to be the earliest species of genus *Cardioceras* (see MARCHAND, 1979, 1986).

Note that the genera *Kosmoceras* and *Distichoceras*, clearly present in the last horizon of the Lamberti Subzone (5B), have never been collected in the Paucicostatum horizon (level 6) of Western Europe. Hecticeratins (about 50% of fauna) abound but still display "Callovian" morphology (Pl. 1: 6, 7, 9, 11). A quite rare species, *Hecticoceras coelatum* COQUAND, is characterized by ventral ribs that are continuous around the ventral axis. In contrast, in the specimens of *H. coelatum* COQUAND, from the Lamberti biohorizon (5B), these ribs never cross the ventral axis. In every French record of this spe-

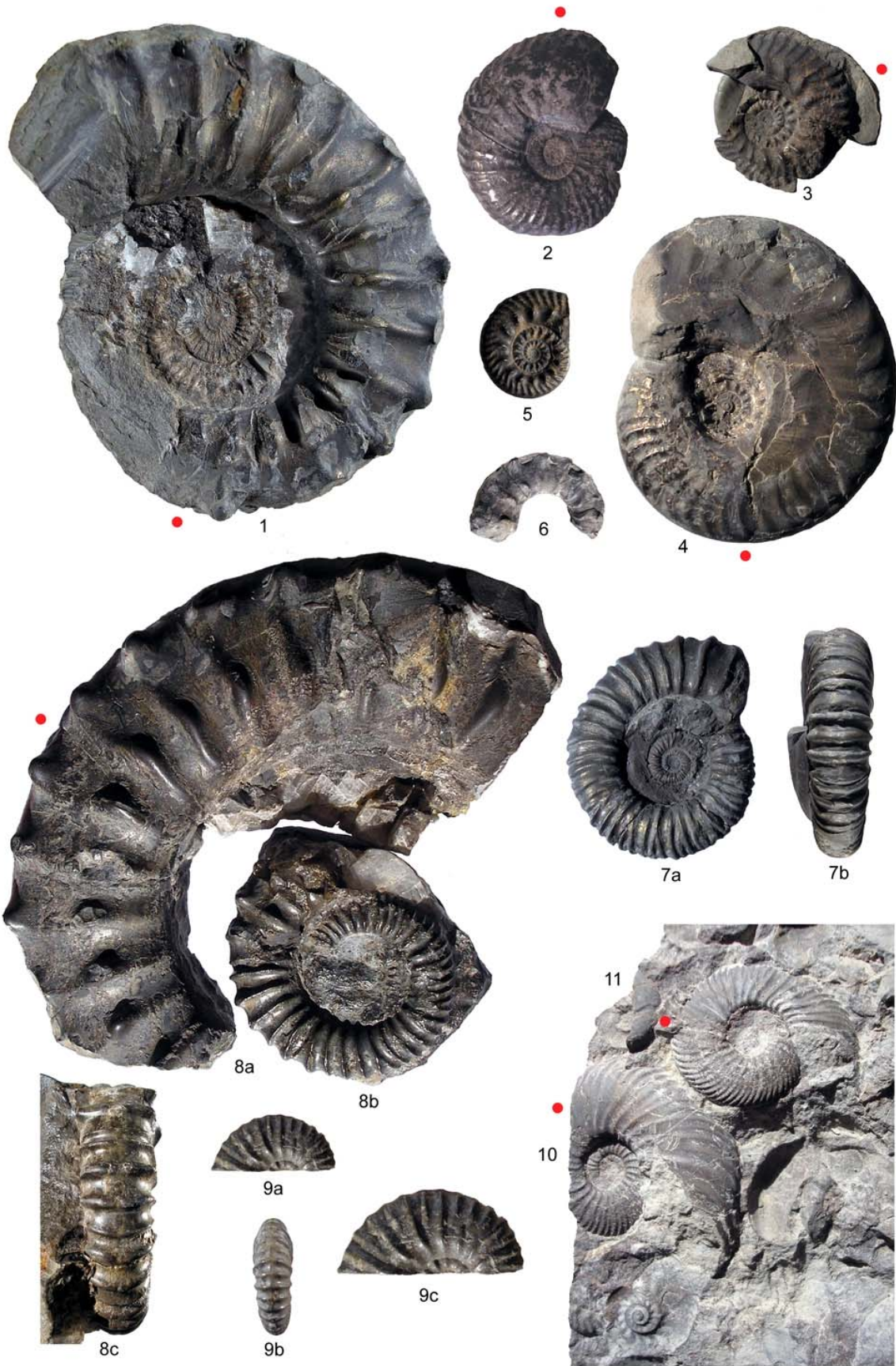
cies, transition from one morphology to the other quite reliably indicates the Callovian / Oxfordian boundary.

Within this biohorizon the history of the two important genera also diverges:

- Cardioceratinae's history changes with the appearance of genus *Cardioceras* (*C. paucicostatum* LANGE) whose successive species are used as biostratigraphic markers up to the end of the mid-Middle Oxfordian;
- Peltoceratinae's history begins to change, slightly later, through the appearance of the first member of *Peltoceratoides* with *P. eugenii* (RASPAIL) (Pl. 1: 13, 14), a species with split ventro-lateral tubercles. Successive species will also be of use in the biostratigraphic subdivision of the Lower Oxfordian (BONNOT, 1995; BONNOT *et al.*, 1997, 2002). In the level 6A, *Peltoceratoides* aff. *Schræderi* does not show split tubercles (Pl. 2: 1).

The combination of these two genus lineages (*Cardioceras* and *Peltoceratoides*) permit a very precise and reliable biostratigraphy.

► **Plate 2: 1.** *Peltoceratoides* aff. *schræderi* (PRIESER) (M). Level 6A, Lamberti Zone, Lamberti Subzone, Paucicostatum horizon, n° DF 2655: Thuoux. **2.** *Cardioceras* aff. *paucicostatum* (YOUNG & BIRD) (M). Level 7, Mariae Zone, Scarburgense Subzone, Thuouxensis horizon, n° DF 1365: Thuoux. **3.** *Hecticoceras (Brightia) thuouxensis* FORTWENGLER & MARCHAND (m). Level 7, Mariae Zone, Scarburgense Subzone, Thuouxensis horizon, n° DF 2605: Thuoux. **4.** *Hecticoceras (Brightia) thuouxensis* FORTWENGLER & MARCHAND (M). Level 7, Mariae Zone, Scarburgense Subzone, Thuouxensis horizon, n° DF 2311: Thuoux. **5.** *Hecticoceras (Brightia) thuouxensis* FORTWENGLER & MARCHAND (m). Level 7, Mariae Zone, Scarburgense Subzone, Thuouxensis horizon, n° DF 18156: Thuoux. **6.** *Euaspidoceras armatum* (de LORIOU) (M). Level 7, Mariae Zone, Scarburgense Subzone, Thuouxensis horizon, n° DF 1457: Thuoux. **7 a, b.** *Peltoceratoides eugenii* (RASPAIL) morphé *eugenii* RASPAIL (M). Level 7, Mariae Zone, Scarburgense Subzone, Thuouxensis horizon, n° DF 1666: Thuoux. **8 a, b, c.** *Peltoceratoides eugenii* (RASPAIL) morphé *eugenii* RASPAIL (M). Level 7, Mariae Zone, Scarburgense Subzone, Thuouxensis horizon, n° DF 2655: Thuoux. **9 a, b, c.** *Hecticoceras coelatum* (COQUAND). Level 8A, Mariae Zone, Scarburgense Subzone, Scarburgense horizon, n° DF 1617: Thuoux. **10.** *Cardioceras* aff. *Scarburgense* YOUNG & BIRD (M). Level 8A, Mariae Zone, Scarburgense Subzone, Scarburgense horizon, n° DF 18751: Thuoux. **11.** *Cardioceras* aff. *Scarburgense* YOUNG & BIRD (m?). Level 8A, Mariae Zone, Scarburgense Subzone, Scarburgense horizon, n° DF 18752: Thuoux. All specimens are from D. FORTWENGLER's collection. Photos: D. FORTWENGLER; preparation of plate: Simone DUTOUR. Magnification: black scale bar = 1 cm, except fig. 9c: red scale bar = 1.5 cm. Red point: end of phragmocone.



1 cm

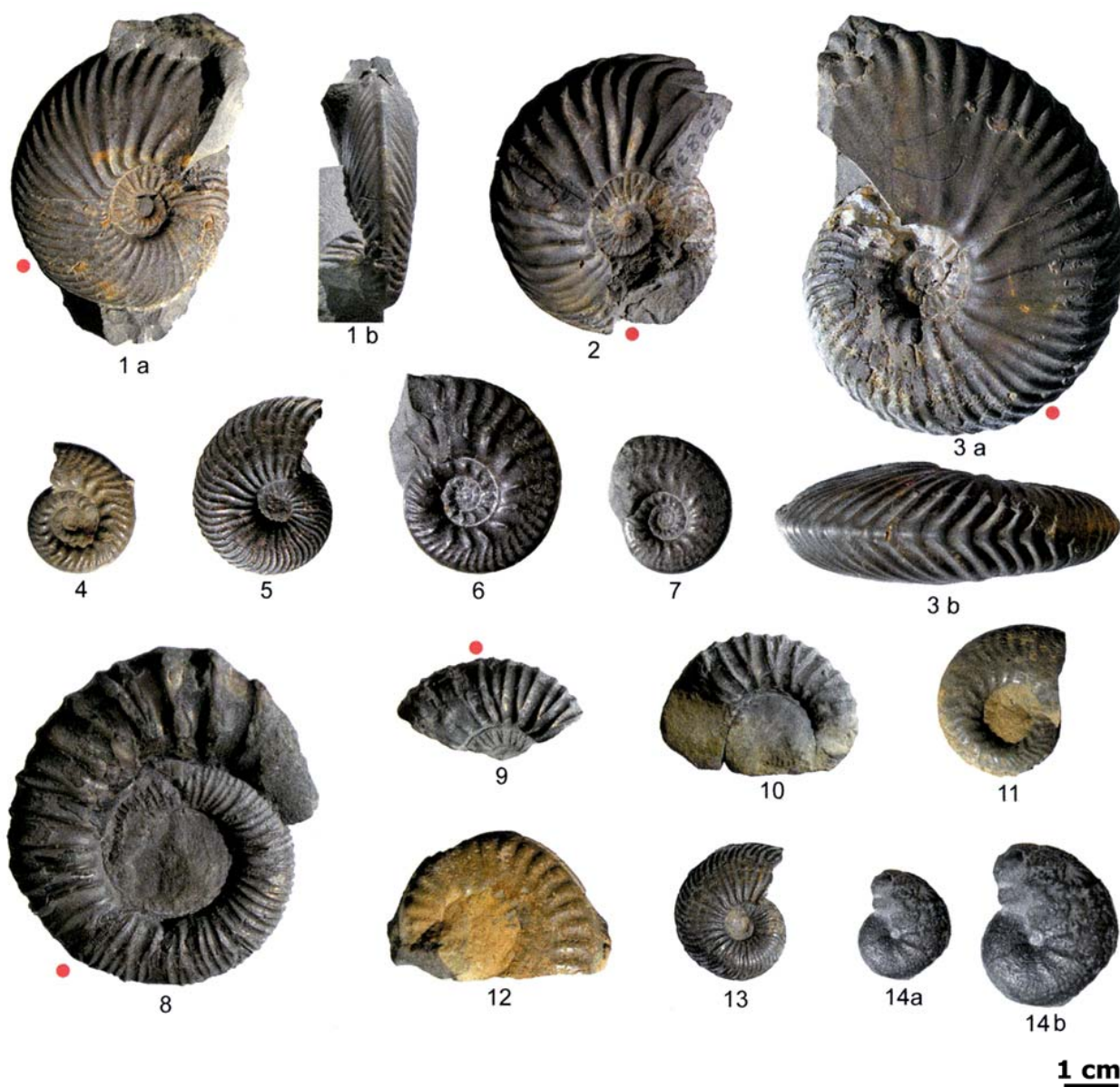


Plate 3: **1 a, b.** *Cardioceras aff. scarburgense* YOUNG & BIRD (M). Level 8A, Mariae Zone, Scarburgense Subzone, Scarburgense horizon, lower part, n° DF 3880: Thuoux. **2.** *Cardioceras aff. scarburgense* YOUNG & BIRD (m). Level 8A, Mariae Zone, Scarburgense Subzone, Scarburgense horizon, lower part, n° DF 3883: Thuoux. **3 a, b.** *Cardioceras scarburgense* YOUNG & BIRD (M). Level 8A, Mariae Zone, Scarburgense Subzone, Scarburgense horizon, lower part, n° DF 3881: Thuoux. **4.** *Hecticoceras (Brightia)* sp. (m). Level 8A, Mariae Zone, Scarburgense Subzone, Scarburgense horizon, lower part, n° DF 1608: Thuoux. **5.** *Cardioceras scarburgense* YOUNG & BIRD (M). Level 8A, Mariae Zone, Scarburgense Subzone, Scarburgense horizon, lower part, n° DF 18419: Thuoux. **6.** *Hecticoceras (Brightia) cf. thuouxensis* FORTWENGLER & MARCHAND (M?). Level 8A, Mariae Zone, Scarburgense Subzone, Scarburgense horizon, lower part, n° DF 18493: Thuoux. **7.** *Hecticoceras (Brightia) chatillonense* de LORIOL (M). Level 8A, Mariae Zone, Scarburgense Subzone, Scarburgense horizon, lower part, n° DF 18767: Thuoux. **8.** *Peltoceratoides eugenii* (RASPAIL) morphe *eugenii* RASPAIL (M). Level 8A, Mariae Zone, Scarburgense Subzone, Scarburgense horizon, lower part, n° DF 3717: Thuoux. **9.** *Peltoceratoides athletoides* (LAHUSEN) morphe *athletoides* LAHUSEN (M). Level 8B, Mariae Zone, Scarburgense Subzone, Scarburgense horizon, middle part, n° DF 1944: Thuoux. **10.** *Peltoceratoides athletoides* (LAHUSEN) morphe *athletoides* LAHUSEN (M). Level 8B, Mariae Zone, Scarburgense Subzone, Scarburgense horizon, middle part, n° DF 18563: Thuoux. **11.** *Hecticoceras (Brightia) chatillonense* de LORIOL (M). Level 8B, Mariae Zone, Scarburgense Subzone, Scarburgense horizon, middle part, n° DF 1875: Thuoux. **12.** *Eochetoceras villersensis* (d'ORBIGNY) (m). Level 8B, Mariae Zone, Scarburgense Subzone, Scarburgense horizon, middle part, n° DF 1385: Thuoux. **13.** *Cardioceras scarburgense* (YOUNG & BIRD) (M?). Level 8B, Mariae Zone, Scarburgense Subzone, Scarburgense horizon, middle part, n° DF 1659: Thuoux. **14 a, b.** *Taramelliceras episcopalis* (de LORIOL). Level 8B, Mariae Zone, Scarburgense Subzone, Scarburgense horizon, middle part, n° DF 19536: Thuoux. All specimens are from D. FORTWENGLER's collection. Photos: D. FORTWENGLER; preparation of plate: Simone DUTOUR. Red point: end of phragmocone.

Basal Oxfordian ammonites (Mariae Zone, Scarborough Subzone, Thuouxiensis, Scarborough and Woodhamense biohorizons) (Pls. 2 - 3).

- Level 7 (at Thuoux: 13m thick).

"Les Richiers" section, ammonites are characterized by occurrence (up to 30% of fauna), of a distinctive Hecticoceratinae taxon: *Hecticoceras* (*Brightia*) *thuouxiensis* FORTWENGLER *et al.* (1997) (Pl. 2: 3, 4, 5). This index species is unknown below (in Paucicostatum horizon) and becomes rare at the base of the Scarborough biohorizon.

The Thuouxiensis biohorizon was first described in the South-Eastern Basin, where it was identified in more than 30 sections. Recently it was also described in the Paris Basin from ANDRA drillings (THIERRY *et al.*, 2006). Throughout the Thuouxiensis biohorizon, the bifurcation points of *Peltoceratoides* always lie in the upper half of the lateral flank (BONNOT *et al.*, 1997, 2002) (Pl. 2: 7, 8). Further, among Cardioceratinae, the *paucicostatum* morph remains present and the *scarburgense* morph (Pl. 2: 2) makes its first appearance.

- Level 8 (at Thuoux: 21.3 m thick).

This level corresponds to the Scarborough biohorizon. The index species is easy to recognize (Pl. 2: 10-11; Pl. 3: 1-3) even though some individuals, mainly among the biggest, might be confused with *C. paucicostatum* LANGE. This stratigraphic level is also characterized by individuals belonging to *Hecticoceras coelatum* species (Pl. 2: 9), whose ribs pass through the venter, *Eochetoceras villersensis* (M) and *E. hersilia* (m) (d'ORBIGNY) (Pl. 3: 12).

In the sub-Tethyan Province, this Scarborough biohorizon is also characterized by *Hecticoceras* with less pronounced sculpture such as *H. chatillonense* (Pl. 3: 7, 11) mainly in 8A (lower part), and *H. socini* (in GYGI, 1990), mainly in 8B (upper part).

Peltoceratins from level 8B (Pl. 3: 8, 9) display abrupt bifurcation points at or near the umbilical seam (BONNOT *et al.*, 1997). At this level, *Taramelliceras* is slightly more frequent (Pl. 3: 14a, 14b).

- Level 9 (at Thuoux: 20 m thick).

At Thuoux, this level corresponds to the Scarborough biohorizon (upper part). Abruptly, ammonites are less frequent and *Cardioceras* is very scarce. Records of *Eochetoceras villersensis* (d'ORBIGNY) and *E. hersilia* (d'ORBIGNY) at the base of that level, as in the French Jura (JARDAT, 2010), and the disappearance of *Hecticoceras coelatum* COQUAND are typical of that level. From this stratigraphic level, Phylloceratina become more abundant than Ammonitina, due to a well-known deepening in numerous sections in Western Europe (DARDEAU *et al.*, 1994). In other sections, very similar to that investigated at Thuoux, the top of this stratigraphic level has

yielded some *Cardioceras* close to the species *C. woodhamense* ARKELL (FORTWENGLER & MARCHAND, 1994a; MARCHAND *et al.*, nearing completion). *C. woodhamense* ARKELL definitively appears above the Scarborough horizon and not below, as claimed by CALLOMON (1993) and PAGE *et al.* (2006, 2009a, b).

- Level 10 (at Thuoux: over 100 m thick).

Though ammonites are very rare, faunal assemblages indicate the Woodhamense horizon and the upper part of the basal Praecordatum Subzone.

In conclusion, the correlation potential of ammonites collected from the Thuoux section is extremely precise (Fig. 5).

In this paper, subdivisions proposed for the Thuoux GSSP are the same proposed in 1997 by THIERRY *et al.* for the Callovian and CARIOU *et al.* for the Oxfordian. They are known in all Western Europe and have been used without difficulty in the United Kingdom, Germany, Switzerland and Poland (MARCHAND & TARKOWSKI, 1990), and only on the basis of Peltoceratins in Bulgaria and Rumania where Cardioceratins are unknown. Correlations may be also possible:

- with Russia, where authors show that these subdivisions can also be used reliably in the boreal domain,
- with South America (Chile, Argentina), Madagascar and India through use of Peltoceratins (*Peltoceratoides*) as shown by BONNOT *et al.* (1977, 2002),
- possibly for the Canadian Oxfordian through Cardioceratinae.

b. Foraminifera

On certain samples, JUTSON (in POULSEN & JUTSON, 1996) wrote: "[Thuoux foraminifers and nannoplankton in the studied interval were low in diversity but moderate in abundance. Preservation was, in general, poor. Only two species recorded were stratigraphically significant](#)". These two species are *Ophthalmidium compressum* OSTENFELD and *O strumosum* (GÜMBEL); *O. compressum* disappears at the Thuouxiensis biohorizon where it is replaced by *O. strumosum*, the latter appearing in the Paucicostatum biohorizon and persisting into the Scarborough biohorizon.

c. Dinoflagellates

This study was carried out by N.E. POULSEN from sampling performed in 1994 during the 4th Oxfordian and Kimmeridgian Working Group Meeting. Results can be summarized as follows. "[Most of the stratigraphical important species are present in the assemblages](#)" (citations from POULSEN in POULSEN & JUTSON, 1996). Comparison of the range charts for the Sournon and Thuoux sections shows that important species occur in both sections. Moreover, POULSEN (in POULSEN & JUTSON, 1996) confirms that *Durotrigia filapicata* GOCHT disappears at the top of the

Callovian whereas *Wanaea fimbriata* SARGEANT appears at the base of the Oxfordian, but is very rare. These results are in accordance with what is known "in North Sea Region and in East Greenland". POULSEN (in POULSEN & JUTSON, 1996) also noted that "the preservation of the palynomorphs in the Thuoux section is poor and the number of cysts is low" and that "in the Savournon section dinoflagellate cysts are excellently preserved and present in large numbers".

d. Ostracodes

Preliminary research shows they seem to be rare but present at Savournon (TESAKOVA, 2008).

e. Isotope stratigraphy

This may be feasible from rare belemnite rostra.

f. Magnetostratigraphy

All samples are negatively remagnetized (B. GALBRUN, oral communication).

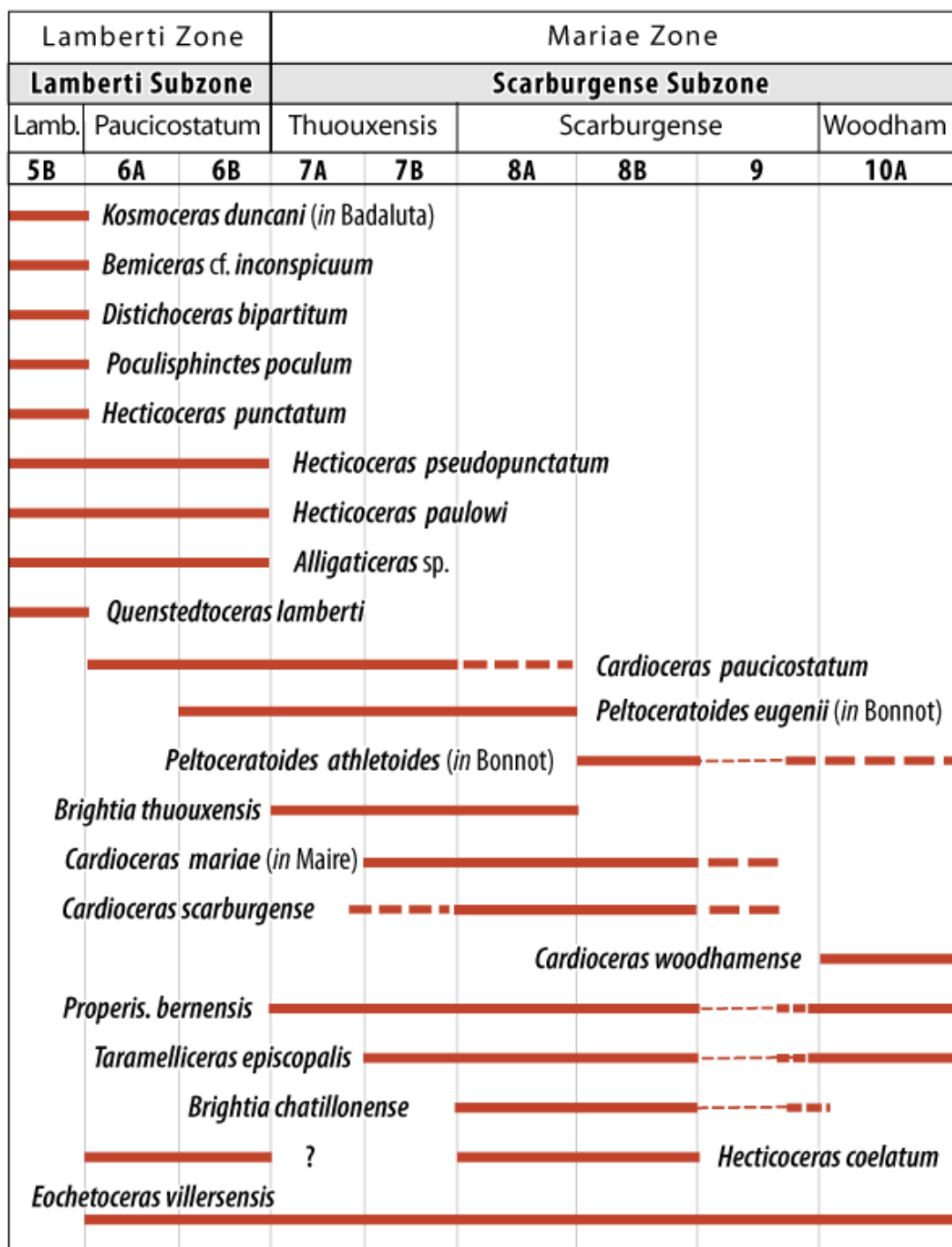


Figure 5: Vertical range of the major species of ammonites found in the "Terres Noires" Formation at the Callovian-Oxfordian boundary (NB: 5B to 10A are field subdivisions).

4. Satisfaction of geological requirements for Thuoux GSSP proposal

The Thuoux section fulfills numerous requirements proposed in the Guidelines of the ICS, *i.e.*, International Commission on Stratigraphy (REMANE *et al.*, 1996).

a. Geological requirements

- Exposure over an adequate thickness (Fig. 2).
- Biohorizons: Lamberti (5B), Paucicostatum (6A and 6B), Thuouxensis (7A and 7B) and Scarburgense (8A and 8B) reach 60m in thickness. Vegetation is very sparse and exposed levels are easy to recognize.
- Continuous sedimentation (Fig. 3): the faunal succession, together with the thickness of sedimentary rock, indicates very continuous sedimentation.
- The rate of sedimentation: for the investigated stratigraphic interval in Western Europe, such a substantial thickness is known only in the "Terres Noires" area of the South-Eastern Basin (together with the centre of the Paris Basin).
- *NB*: On the basis of biostratigraphic data, the sedimentation rate is 6 to 20 times higher than in Weymouth, UK.
- Absence of synsedimentary and tectonic disturbances: the Thuoux section is undisturbed, and neither faults nor landslides have been noticed. Moreover, strong layer dip makes mixing of faunas unlikely.
- Absence of metamorphism and strong diagenetic alteration: both phenomena are absent. Superficial erosion and weathering maintains the section in a very good state, which makes collection of samples easy for every type of geological study.

b. Biostratigraphic requirements

- Abundance and diversity of well-preserved fossils: ammonites are abundant and well-preserved, and always greatly exceed other macroinvertebrates in abundance. They are often extracted, entire rather than crushed, from calcareous nodules. Fossils at Thuoux are characterised by a mineralogy that is stable in a weathering environment. Though MELÉNDEZ (2003, 2004, 2006) asserted the occurrence of pyritic replacement of ammonites at Thuoux, any pyritic ammonites would have been altered to goethite. In fact, neither pyritic nor goethitic preservation is present! Boreal as well as Mesogean faunas can be collected. Moreover, the analysis of

ammonite faunas in the South-Eastern Basin in the context of synsedimentary tectonics (DARDEAU *et al.*, 1994) has allowed better understanding of faunal distribution in relation to palaeodepth in Western Europe (MARCHAND & DARDEAU, 1979; MARCHAND, 1984; MARCHAND *et al.*, 1990). Microfossils are quite numerous and some groups can be used for some biostratigraphic schemes whose precision is, at its best, of subzonal scale.

- Absence of vertical facies changes (Fig. 2): the Callovian / Oxfordian boundary occurs in a series of marls that lack facies changes other than some fluctuations in the carbonate content.
- Favourable facies for long-range biostratigraphic correlation (Fig. 3): the Thuoux section yields three ammonite subfamilies (Cardioceratinae, Peltoceratinae and Hecticoceratinae) whose morphological evolution was rapid, though not synchronous. These factors ensure 1) the reliability of the faunal successions at the Callovian / Oxfordian boundary and 2) the biostratigraphic precision of biostratigraphic units. These three subfamilies also allow correlations not only with all Western Europe but also with the Boreal Realm (North America) and the Pacific Realm (Argentina, Chile). As taxa of these three subfamilies are not always found together, it is important to be able to use three parallel schemes for biostratigraphic control.

c. Other methods

- Radioisotopic dating: not applied.
- Magnetostratigraphy: numerous analyses were always negative in the South-Eastern Basin, in contrast to Redcliff Point.

d. Faunal populations

- Ammonites: at each stratigraphic level examined, ammonites were collected *in situ* and exhaustively. Thus faunal diagrams depict the faunal composition of each level (each biohorizon commonly being subdivided into two ammonitic sections: lower / upper). They also summarize our knowledge of the palaeodepth of the fossiliferous deposits studied. One of us has even used these faunal diagrams to establish the occurrence of extensional tectonic events during the earliest Oxfordian (Scarburgense Subzone: MARCHAND, 1986) and more precisely between the Scarburgense and Woodhamense biohorizons (MARCHAND, 1986) (Fig. 5).
- Foraminifera: diversity is low, but the occurrence of *Ophthalmidium compressum* OSTENFELD in the uppermost Callovian and *Ophthalmidium strumosum* (GUMBEL) in the lowermost Oxfordian can be used for bio-

stratigraphy.

- Dinoflagellates: *Durotrigia filapicata* GOCHT is rare in the uppermost Callovian (Lamberti horizon) and disappears in the lowermost Oxfordian (Scarburgense horizon) where *Wanaea fimbriata* SARGEANT, also rare, first occurs.

e. Other requirements

- Permanently fixed marker: conservation of the section proposed as GSSP is assured at Thuoux. The Thuoux section is located in a huge area of badlands that are neither cultivable nor suitable for building.
- Accessibility (Fig. 1): access will be free for every researcher. Access is possible from a parking zone (at the nearby cemetery) located 10 minutes' walk from the section, on a gentle slope (30 m difference in height). Researchers will be able to work without constraint by using the same biostratigraphic subdivisions proposed by ammonite specialists (D.F. and D.M). Permanent marking of the biostratigraphic units recorded by the authors is easy to make.

5. Correlations and comparisons with the alternative candidate GSSPs

a. Redcliff Point, Weymouth, Dorset (UK)

This section, well analysed by PAGE *et al.* (2006, 2009a), has six shortcomings, here addressed in order of decreasing importance.

* The first disadvantage is clearly acknowledged by the British authors themselves: the section is not reliably exposed. "For some time, the exposure (Redcliff Point) has been covered by talus and vegetation, but recent coastal erosion has now re-exposed a Callovian-Oxfordian boundary sequence" (in PAGE, 1994a, b). "The extent and quality of the exposure at Ham Cliff varies from season to season and from year to year, depending on the height of the shingle storm beach and cliff erosion" (in MELÉNDEZ, 2003: 30, p. 17). "The section has been obscured by slumping in recent years" (in MELÉNDEZ, 2004: 31, p. 9). "Correlation between these descriptions by different authors has been difficult due to the variable condition of the exposure and the non persistence of various beds taken as marker horizons" (in PAGE *et al.*, 2006). "The soft nature of the mudrock outcrop makes the placing of a permanent marker problematic" (in PAGE *et al.*, 2009b, p. 107). But PAGE *et al.* (2009b, p. 107) wrote in conclusion that "although the area is subject to contemporary landslipping, continuous cross-boundary sequences remain available."

We therefore spent many hours at this section with CHAPMAN in 2003 and we (FORTWENGLER & MARCHAND) confirm that it is very difficult,

even for Callovian / Oxfordian boundary specialists, to recognise the lithological succession described by PAGE *et al.* (2009a, b: fig. 2, p. 105). CALLOMON (in CALLOMON & COOPE, 1993) had said about the Ham Cliff section -close to Redcliff Point- (quoted by G. MELÉNDEZ: 2003) "The reason why it had been neglected since ARKELL's days was that it was usually obscured by slumping and shingle. I remember looking at it in 1956 and actually finding the Lamberti Zone there, in a small outcrop above the shingle. But all I learned was that it confirmed ARKELL's report of an occurrence which had been ignored previously. Exceptional storm conditions in the winter of 1991-1992 swept it all clear, giving a fine exposure." And CALLOMON (in CALLOMON & COOPE, 1993) described an exceptionally clean section at Redcliff Point where *C. woodhamense* ARKELL occurs below *C. scarburgense* (YOUNG & BIRD). Unfortunately, PAGE *et al.* (2009a) have accepted that mistaken succession.

* The second drawback is palaeontological: the faunal assemblage is poorly preserved, with rather low diversity. The assemblage has not been illustrated, except for the Cardioceratinae (1 plate). It should be emphasized that Cardioceratinae predominate at Redcliff Point, but are "typically crushed" (though not always the inner whorls). This makes observation of the venter very difficult so that no fully reliable determination is possible. In addition, Hectioceratinae are rare and the absence (in PAGE *et al.*, 2009a) of *Hectioceras (Brightia) thuouxensis* FORTWENGLER & MARCHAND does not allow recognition of the Thuouxensis biohorizon. However, this species is present close to Redcliff Point: it has been figured by CHAPMAN (1999: Pl. 7, fig. F) in association with *H. (B.) chatillonense* de LORIOU (CHAPMAN, 1999: Pl. 7, figs. G-H). *H. (B.) thuouxensis* was also collected in Paris Basin boreholes (THIERRY *et al.*, 2006) and in the Jura (JARDAT, 2010). It is not a rare species at that level. Finally, individuals belonging to the genus *Peltoceratoides*, which is present though not abundant, were not used by PAGE and collaborators as biostratigraphic markers even though they are chronologically as precise as *Cardioceras* at the Callovian / Oxfordian boundary in the South-Eastern Basin of France (FORTWENGLER *et al.*, 1997; BONNOT *et al.*, 1997, 2002).

* The third disadvantage concerns ammonite systematics. The PAGE *et al.* (2009a, b) proposal relies on a dubious determination of Cardioceratinae species as well as an erroneous phylogeny.

- *Cardioceras paucicostatum* LANGE is close to *C. scarburgense* (YOUNG & BIRD) and must be included in the genus *Cardioceras*. Why is this? The first representatives of *C. scarburgense* (YOUNG & BIRD) are in morphological continuity with *paucicostatum* LANGE, which is confirmed by the existence of "fea-

tures transitional to *C. (Pavloviceras) scarburgense* (YOUNG & BIRD)". Both forms are present in horizons LL3c-d and Ox1 of PAGE *et al.* (2009a, p. 93) at Redcliff Point;

- *Cardioceras redcliffense* PAGE *et al.* (2006), named *Cardioceras (Pavloviceras) redcliffense* (2009a), in our opinion has no palaeontological reality. We regard *C. redcliffense* PAGE *et al.* as a synonym of *Cardioceras paucicostatum* LANGE, 1973. As a matter of fact, in the Ox1 biohorizon, the holotype of *C. redcliffense* (PAGE *et al.*, 2009a: pl. 1 D) shows a *C. scarburgense*-like morphology but among a population where "*paucicostatum*" morphology is still abundant (PAGE *et al.*, 2009a: Pl. 1 C, E-G). Unfortunately, no information on Hecticoceratins and Peltoceratins is available to permit precise correlation with the Thuoux section.
- *Cardioceras scarburgense* (YOUNG & BIRD) from Scarburgense biohorizon is quite easy to differentiate from *C. paucicostatum* LANGE. The holotype of *C. scarburgense*, from Scarborough, was figured by ARKELL (1939: Pl. X, fig. 1a-c). It is characterized by a) a moderate number of primary ribs, b) secondary ribs that are more or less prorsiradiate and c) a venter lacking crenulation in lateral view. These morphological characteristics are exactly the same:
 - at Authoison (Département de Haute-Saône, France), where a large population of *C. scarburgense* shows exactly the morphological variations of that species, well illustrated by MAIRE in 1938 (Scarburgense biohorizon);
 - in populations of *C. scarburgense* collected in the levels 8A/8B and basal 9 from "Terres Noires" of French South-Eastern Basin (FORTWENGLER & MARCHAND, 1994a);
 - in populations of *C. scarburgense* collected at Uzelot (in Boulonnais) from the levels IT 20/30 and IT 30/40 (VIDIER *et al.*, 1993);
 - in the horizons named Scarbu (1) and Scarbu (2) from French Jura (JARDAT, 2010).
- *Cardioceras woodhamense* ARKELL is for us clearly younger than *C. scarburgense* (YOUNG & BIRD). Remark: PAGE *et al.* (2009a: p. 92 and 95) placed the Redcliffense biohorizon just below the Woodhamense biohorizon (Ox2) and accepted the Scarburgense biohorizon (Ox3) above the Woodhamense biohorizon. Quite evidently, that stratigraphy cannot be right. In a forthcoming paper (MARCHAND *et al.*, nearing completion) we confirm through very close analysis of facts determined

from numerous sections that *C. woodhamense* ARKELL is younger than *C. scarburgense* (YOUNG & BIRD) and that ammonite populations from the Scarburgense and Woodhamense horizons are clearly very different from each other. Some insights from our results:

(i) About *scarburgense* (YOUNG & BIRD) and *woodhamense* ARKELL (FORTWENGLER & MARCHAND, 1994b; MARCHAND *et al.*, nearing completion).

1. *C. scarburgense* (YOUNG & BIRD) does not yet have an individualized keel, and shows no proverse ribs making a chevron (V-shape) on the venter;
2. In contrast, the species *C. woodhamense*, erected by ARKELL in 1939, incorporates an apomorphy that characterizes every later *Cardioceras* species: the presence of a keel or, more precisely, of primary and secondary ribs elevated on the ventral axis, forming a fairly prominent chevron. In lateral view, *C. woodhamense* shows a rather crenulated venter, which never occurs in *C. scarburgense*.

(ii) About Woodham Brick Pit *Cardioceratinae* and about *C. redcliffense* (MARCHAND *et al.*, nearing completion).

1. *Cardioceratinae* from the Woodham Brick Pit, pictured by ARKELL under the following names: *Q. mariae*, *Q. omphaloides*, *Q. aff. williamsoni* (all with undulating ribs in inner whorls like the holotype of *C. woodhamense* ARKELL), correspond to the "thick" and "medium thick" morphotypes of *C. woodhamense* ARKELL.
2. As consequence: the 157 *C. scarburgense* not pictured by ARKELL are simply, from a biological point of view, the "thin morph" of *C. woodhamense* ARKELL.

So our conclusion is that, at Woodham Brick Pit, there is a lacuna in place of the Scarburgense biohorizon because the Woodhamense biohorizon (levels A and B of ARKELL, 1939) lies directly on the Upper Callovian (stratigraphic level C, Lambert biohorizon, ARKELL, 1939).

Remark: The same lacuna at the Scarburgense biohorizon is also known in Normandy (RAYNAUD, oral

communication).

In summary, *Cardioceras redcliffense* (PAGE *et al.*, 2009a) looks like *C. paucicostatum* LANGE except for some individuals which are similar to *C. scarburgense* (YOUNG & BIRD), such as the holotype (PAGE *et al.*, 2009a: Pl. 1D). No variants are close to *C. woodhamense* ARKELL.

(iii) About the succession of ammonite assemblages in Western Europe (MARCHAND, 1986; MARCHAND *et al.*, nearing completion).

ARKELL (1939) exhaustively collected 899 ammonites from levels A and B at Woodham Brick Pit. The collection consists of *Cardioceratinae* (n = 297; 33% of the total assemblage), *Hectioceratinae* (N = 102; 11.3 %), *Perisphinctinae* (n = 73; 8.1 %), *Euaspidoceratinae* (n = 44; 4.9 %) and also g. *Taramelliceras* (n= 281; 31.2 %) and *Creniceras* (n = 102; 11.3%).

In the French Jura (JARDAT, 2010), as well as in the Swiss Jura (GYGI, 1990), *Taramelliceras* and *Creniceras* are always scarce in association with *C. scarburgense*, but always abundant with *C. woodhamense*, collected above. A similar succession occurs in Weymouth at Redcliff Point. CHAPMAN (1999: Pl. 9) has pictured individuals that belong to *C. woodhamense* ARKELL, in particular, the individual of his fig. U, which is very similar to ARKELL's holotype. These *C. woodhamense* are associated with *Taramelliceras* sp. and *C. renggeri*, as at Woodham Brick Pit. These results are very clearly synthesized by CHAPMAN (1999) in his fig. 10, p. 95.

In conclusion, the succession of biohorizons at Redcliff Point is actually: *C. paucicostatum* → *C. scarburgense* → *C. woodhamense*, instead of *C. paucicostatum* → *C. redcliffense* → *C. woodhamens* → *C. scarburgense*.

* The fourth drawback is connected with sedimentation.

At Redcliff point, clays representing the youngest Callovian biohorizon and the oldest Oxfordian biohorizon are no thicker than 50 cm (PAGE *et al.*, 2009a: fig. 1). Thus, the following sentence is surprising: "Although the biohorizons are thinner, the Redcliff Point sections currently offer the potential for higher resolution than has been described for SE France" (PAGE *et al.*, 2009a).

It is particularly surprising since, at Thuoux, the thickness of the same horizons (levels 6B and 7) reaches about 20m, which is 40 times thicker than at Redcliff. However, the three palaeontologists that have worked at Thuoux were unable to identify within those 20 m more than two geographically widespread biohorizons, although the ammonite assemblages there are more diverse.

* The fifth drawback concerns the thickness of the section.

The small thickness observed at Redcliff Point makes any cyclostratigraphic analysis dubious. By contrast, such an analysis may be made in twenty sections of the South-Eastern Basin where precise biostratigraphic control is available. The Thuoux and Saint-Pierre-d'Argençon sections, for instance, could be sampled every 8 cm.

* The sixth drawback concerns correlations with the Boreal Domain and the Pacific Province.

In the Redcliff Point GSSP proposal (p. 90 - 91), PAGE *et al.* (2009a) have written about the "bioprovincial context" in general, without any attempt to correlate the various biostratigraphic schemes with each other.

- For the Arctic Province, they write only that "there is no reason to suspect that the basic succession of *Qenstedtoceras* to *Cardioceras* faunas differs in any significant way from that in adjacent Subboreal areas". But they also claim that "there is some evidence of endemic cardioceratid in ... North America".
- For the Subboreal Province, they refer only to the domination of the *Cardioceratids*. On the Isle of Skye (Scotland), only *Cardioceratids* occur, except for one level which yields only *Peltoceratoides* sp. (TURNER, 1966). That stratigraphic level - very easy to find at Staffin Bay - marks the topmost *Praecordatum* Subzone, just a little below the *Bukowskii* Subzone (MARCHAND & DARDEAU, 1979).
- No confident conclusions can be drawn from the Russian forms, which are very well described by KISELEV *et al.* (2004, 2005, 2006), nor from the South American and Pacific provinces.

For us, this is problematic because every GSSP must be, by definition, a reference point for any available biostratigraphic schemes. That is the true aim of a GSSP.

* Appendix: The case of Peyrale (Savournon, near Serres, Hautes-Alpes) proposed as GSSP auxiliary section.

Since 2003, MELÉNDEZ has considered that the Peyrale section located close to Savournon "displays some particular features making it a suitable candidate section for Oxfordian GSSP". In 2007, in a new paper by MELÉNDEZ, ATROPS and PAGE (2007: fig. 3), these authors proposed this section as an "auxiliary section" of the Redcliff Point GSSP. The first 10m are attributed to the "Lamberti biozone" (levels 10 to 21) and the last 4-5 m (levels 19-21) yielded *C. paucicostatum* LANGE (= *Q. paucicostatum* in PAGE *et al.*, 2009a). As in the Redcliff section, MELÉNDEZ,

ATROPS and PAGE recognized three levels in the Paucicostatum horizon, which are from lower to upper:

- *C. paucicostatum*-alpha "involute forms showing thick, bundled ribbing with low point of furcation";
- *C. paucicostatum*-beta "more typical, thickly ribbed (non-bundled) evolute forms";
- *C. paucicostatum*-gamma, "showing finer, slightly projected ribbing and the beginning of a ventral keel on innermost whorl"; these gamma forms are "common at level 21-c and become rare at bed 23a".

These authors place the "base of the Oxfordian stage at the base of the level 23 coinciding with the first recording of some specimens of *Cardioceras* of the group *C. redcliffense* PAGE *et al.*, a new form displaying clear intermediate features between *C. paucicostatum*-gamma and *C. scarburgense* (YOUNG & BIRD)".

At this juncture, two points should be made. In our study of the Peyrale/Savournon section (FORTWENGLER & MARCHAND, 1994d) we were able to state that:

- we could not identify three sub-biohorizons within our Paucicostatum biohorizon,
- we did not see "the development of a clear ventral keel in the inner whorls up to 15-20 mm of shell diameter and the ribbing on the flank becoming slightly finer and more flexuous" before the first occurrence of *C. scarburgense*.

Final remark: the Woodhamense biohorizon, which at Redcliff Point (PAGE *et al.*, 2009a) lies between the Redcliffense and Scarburgense biohorizons, vanishes in the Peyrale section. Since we know the Peyrale / Savournon section very well (FORTWENGLER & MARCHAND, 1994b), we are aware that the Woodhamense biohorizon is present at Savournon. However we collected that species more than 25 m above the Paucicostatum horizon. As everywhere else, the Woodhamense biohorizon lies above the Scarburgense horizon, and not below.

b. Dubki section: Russia

Interesting information on the Callovian / Oxfordian boundary comes from our Russian colleagues and a short summary follows. According to KISELEV and ROGOV (2004, 2005) and KISELEV *et al.* (2006), the Callovian / Oxfordian boundary is readily identifiable at Dubki, Saratov (52nd parallel). Thus, in 2006, they proposed the Dubki section as a candidate GSSP for the Lower Oxfordian boundary. We wish to address certain points related to this proposal. The Lamberti Zone (Upper Callovian), 4.60m thick, is subdivided into 2 subzones (Henrici and Lamberti) and 5 biohorizons (*Henrici*, *Praelamberti*, *Lamberti*, *Mojarowskii* and *Paucicostatum*).

The Mariae Zone, 2.60m thick, is subdivided into two subzones (Scarburgense, Praecordatum) and 3 biohorizons (*Scarburgense*, *Alphacordatum* and *Praecordatum*). In Russia, the genus *Taramelliceras* and the species *Creniceras renggeri* occur quite late (Bukowskii Subzone). Latest *Kosmoceras* disappears at the top of the *Mojarowskii* biohorizon (with the species *K. mojarowskii*), whereas the last occurrence of the genus *Quenstedtoceras* is registered slightly higher, at the Callovian / Oxfordian boundary, consistent with Western Europe.

Concerning ostracods, the species *Infacythere dulcis* disappears at the Callovian / Oxfordian boundary whereas *Nophrecythere oxfordiana* first occurs slightly above that boundary (TESAKOVA, 2008). The same level is readily recognized for foraminifera which are represented by diverse and abundant benthic taxa. The Callovian / Oxfordian boundary coincides with the boundary between the *Lenticulina tunida* and *Epistomina elschankensis* zones and the *Ophthalmidium sagittum* and *Epistomina volgensis* zones. This section has yielded good palaeomagnetic results based on reversals, except at the Callovian / Oxfordian boundary.

In 2004, KISELEV and ROGOV had proposed an identical zonation for the Lamberti Subzone. In contrast, their proposed subdivision of the Mariae Zone differs slightly from our proposal.

At the base is the Scarburgense biohorizon from which they record two species, *Vertumniceras luppovi* (AMANNIJASOV) and *Sublunoceras deperditum* (ROLLIER), that are absent from assemblages in France, the United Kingdom and Switzerland. However, they have accepted the Woodhamense biohorizon as proposed by FORTWENGLER and MARCHAND in 1994b. This is reasonable as we regard the individual of Pl. 2: 17 of the former authors (Orenbourg area: in KISELEV & ROGOV, 2004) as being very close to *C. woodhamense* var. *normandiana*. KISELEV and ROGOV (2004) consider that the Praecordatum Subzone begins with an unnamed horizon that yields *Cardioceras praecordatum* and *Peltoceras* sp., overlain by the Renggeri horizon that yields *Taramelliceras* (*Richeiceras*), *Creniceras*, *Peltoceras* sp. and *Cardioceras* cf. *alphacordatum*. Their pictures of *Q. henrici*, *Q. praelamberti*, *Q. lamberti*, *C. scarburgense*, *C. praemartini*, *C. alphacordatum*, *C. praecordatum* and *C. bukowski* seem to us to be correctly identified except for *C. costicardia* (their fig. 11/12), *C. cordatum* (their fig. 13/14) and *C. paucicostatum* (their fig. 15/16). Species found in France and the United Kingdom have been shown to be present in Russia also, which makes correlation possible, as KNIAZEV (1975) had already demonstrated.

The importance of the Dubki section is thus well established, in particular, due to mixing of "Boreal" and "Tethyan" faunas, which make

long-distance correlations possible. Noticeable is that this faunal mixing, as frequently in Western Europe, occurs near the boundary between the Scarburgense and Praecordatum biohorizons whenever the palaeoenvironment was sufficiently open.

- Nevertheless, the stratigraphic ranges of some species are not in strict accordance with what we know in the "Terres Noires" and at Thuoux in particular. For example the Paucicostatum biohorizon at Dubki yields both *Poculisphinctes* and *Alligaticeras* (GULYAEV *et al.*, 2002), and *Euspidoceras subbabeaeanum* (SINTZOW) *sensu* JEANNET even crosses the Callovian / Oxfordian boundary;
- Hectococeratinae appears quite rare in that area and absent above the lowermost Oxfordian levels. Thus, general correlation with the Thuoux section is not yet demonstrated with that subfamily;
- Although the faunal record shows considerable similarity with the Tethyan regions, there is no quantitative study yet.

It is important to note that some species recorded at Dubki have been identified from other deposits by ROGOV and EGOROV (2003) and KISELEV and ROGOV (2005). We are in agreement with almost all the proposed names. Accurate correlation with Western Europe is now possible with the help of these excellent papers.

c. Our proposals for correlation outside of Europe

* Argentina (biochronological interpretation: A. BONNOT)

In "Biostratigraphy of the transect Chacay Melehue-Sierra de Reyes, Argentina", PARENT (1998) considered the dimorph pair *Peltoceras gr. constantii* (M) / *arduennense* (m) typical of the Cordatum Zone (lower part). The proposed occurrence of *Prososphinctes gr. mazuricus* / *claramontanus* and *Prososphinctes gr. mairei* / *matheyi* confirms that interpretation. By contrast *Mirosphinctes gr. syriacus* / *regularis* and *Euspidoceras cf. kobyi* would rather suggest the Mariae Zone, and some individuals collected at Rahueco are similar to those described from Mount Hermon (Syria) for the lowermost Oxfordian. In our opinion, many specimens from Syria are very close to *Eochetoceras villersensis* / *hersilia*, a dimorph species that characterizes the top of the Lamberti Subzone up to the base of the Woodhamense biohorizon (RAYNAUD *et al.*, nearing completion) in France and the United Kingdom.

Later, in 2006, PARENT compared ammonite successions of the Middle Callovian to Upper Oxfordian in both Neuquén-Mendoza and Tarapaca basins. Near to the Callovian-Oxfordian boundary he recognized:

- Athleta Zone, demonstrated by the occur-

rence of *Pseudopeltoceras* sp. and *Peltoceras* (*P.*) cf. *athleta*;

- Primus Zone that yields the genus *Distichoceras* (top of Athleta Zone / probable Lamberti Zone);
- In the Neuquén-Mendoza Basin, the lower Oxfordian is represented by the Pressulus Zone only, which yields 3 species of genus *Peltoceratoides*, *P. pressulus*, *P. ballenaensis* and *P. cf. intercissus*. By comparison with Western European species, these species indicate the Scarburgense Subzone (BONNOT *et al.*, 2002). However, if the identifications of *Perisphinctes cf. mazuricus* / *matheyi* are correct, this instead suggests the base of the Praecordatum Subzone;
- In the Tarapacá Basin, the lower Oxfordian is represented by 3 zones; it begins with *Peltoceratoides retrocostatum* and *P. dimorphosus* (Dimorphosus Zone) and then continues with *Peltoceratoides eugenii* and *P. ballenaensis* (Eugenii Zone).

* Chile (biochronological interpretation: A. BONNOT).

HILLEBRANDT and GROSCHE (1995) have described a biostratigraphic succession based on different species of the genus *Peltoceratoides*. They considered the Primus Zone to be equivalent to the Lamberti Zone, and Dimorphus and Eugenii zones equivalent to the Mariae and Cordatum zones.

As has been pointed out by BONNOT *et al.* (2002), "if we roll out the hypothesis of pronounced endemism ... the Chilean forms described ... can all be ascribed either to *Peltoceratoides eugenii* (d'ORBIGNY) or to *Peltoceratoides athletoides* (LAHUSEN)". As a consequence: their "Eugenii Zone" must be correlated with the Athletoides Subzone of the Mediterranean province = Scarburgense Subzone of Western Europe.

* North America (biochronological proposition: D. MARCHAND & D. FORTWENGLER).

REESIDE (1919) figured ammonites from Wyoming (Sundance Formation) and from Montana (Ellis Formation). In these regions, he recognized the genus *Quenstedtoceras* and 5 species. In our opinion, only *Q. collieri* (from the Ellis Formation) can be a true *Quenstedtoceras*. The other species (of the Sundance Formation) seem to have a small keel and are, probably, true *Cardioceras*. REESIDE (1919) distinguished three groups of cardioceratids, for us, from the Mariae Zone:

1. *Cardioceras albanense*, *C. crassum*, *C. latum*, and *C. russelli*, *Quenstedtoceras hoveyi*, *Q. subtumidum* and *Q. suspectum*. These "species" have morphological affinities with European fauna of the Scarburgense Subzone;

2. *Cardioceras americanum*, *C. auraroense*, *C. bellefourchense*, *C. crookense*, *C. plattense*, *C. obtusum* and *C. wyomingense*. These "species" have morphological affinities with the European fauna from the base of the Praecordatum Subzone;
3. *Cardioceras alaskense* (but not Pl. 7, figs. 1-3), *C. cordiforme*, *C. distans*, *C. haresi*, *C. hyatti*, *C. lilloetense*, *C. martini*, *C. schuberti*, *C. spiniferum*, *C. stantoni* and *C. whitfieldi* have morphological affinities with the European fauna from the upper part of the Praecordatum Subzone.

* "Pacific area part" (BONNOT *et al.*, 2002)

Peltoceratoides williamsoni (PHILLIPS) and allied species are found almost worldwide, and correlations can be envisaged between Western Europe and the Indo-Madagascar domain + Indonesia + Japan, where the genus *Peltoceratoides* is known.

Acknowledgements

We acknowledge the valuable comments on the initial draft by Raymond ENAY, the careful linguistic improvement provided by the Language Editor, Stephen CAREY, and the detailed remarks of the Referees of this paper, Nicol MORTON, Federico OLORIZ and Mikhail ROGOV, who contributed to improve the scientific impact of this publication. Last but not least our thanks also go to the Copy Editor, Christian C. EMIG, and the Editor, Bruno GRANIER.

Bibliographic references

- ARHELL W.J. (1939).- The ammonite succession at the Woodham Brick Company's Pit, Akenan Street Station, Buckinghamshire, and its bearing on the classification of the Oxford Clay.- *Quarterly Journal of the Geological Society of London*, vol. 95, p. 135-222.
- BADALUTA A. (1976).- Biostratigraphical precisions upon the Middle Jurassic series in Anina (zone Resita, Banat).- *Dări de seamă ale şedinţelor Institutului Geologic Bucureşti*, 62, p. 73-84.
- BONNOT A. (1995).- Les Aspidoceratidae d'Europe occidentale au Callovien supérieur et à l'Oxfordien inférieur.- Thèse de Doctorat, Université de Bourgogne, Dijon, 487 p.
- BONNOT A., FORTWENGLER D. & MARCHAND D. (1997).- Les Peltoceratinae (Ammonitina, Aspidoceratidae) au passage Callovo-Oxfordien dans les "Terres Noires" du Sud-Est (France).- *Géobios*, Villeurbanne, vol. 30, p. 651-672.
- BONNOT A., COURVILLE P. & MARCHAND D. (2002).- Parallel biozonation in the Upper Callovian and the Lower Oxfordian based on the Peltoceratinae subfamily (Ammonitina, Aspidoceratidae).- *Abhandlungen der Geologischen Bundesanstalt*, Wien, vol. 57, p. 501-507.
- BOULILA S. (2008).- Cyclostratigraphie des séries sédimentaires du Jurassique supérieur (Sud-Est de la France, Nord de la Tunisie) : contrôle astro-climatique, implications géochronologiques et séquentielles.- Thèse de Doctorat, Université Pierre et Marie Curie, Paris, 313 p.
- BOULILA S., HINNOV L.A., HURET E., COLLIN P.Y., GALBRUN B., FORTWENGLER D., MARCHAND D. & THIERRY J. (2008).- Astronomical calibration of the Early Oxfordian (Vocontian and Paris basins, France): consequences of revising the Late Jurassic time scale.- *Earth and Planetary Science Letters*, Amsterdam, vol. 276, p. 1-2 & 40-51.
- CALLOMON J.H. & COPE J.C.W. (1993).- The Jurassic geology of Dorset: guide to excursions.- ARKELL International symposium (September 1993), University College London, p. 42-48.
- CARIOU E., ENAY R., ATROPS F., HANTZPERGUE P., MARCHAND D. & RIOULT M. (1997).- Oxfordien. In: CARIOU E. & HANTZPERGUE P. (coord.), Biostratigraphie du Jurassique ouest européen et méditerranéen : zonations parallèles et distribution des invertébrés et microfossiles.- *Bulletin des Centres de Recherches Exploration-Production elf aquitaine*, Pau, Mémoire 17, p. 79-86 & 144-147.
- CHAPMAN N.D. (1996).- The rediscovery of *Creniceras renggeri* (OPPEL) in the Upper Oxford Clay near Weymouth.- *Proceedings of the Dorset Natural History and Archaeological Society*, Dorchester, vol. 117, p. 153-154.
- CHAPMAN N.D. (1997).- Ammonites from the Oxford Clay near Budmouth School and Tidmoor Point, Weymouth, and their bearing on the Callovian/Oxfordian boundary.- *Proceedings of the Dorset Natural History and Archaeological Society*, Dorchester, vol. 119, p. 117-127.
- CHAPMAN N.D. (1999).- Ammonite assemblages of the Upper Oxford Clay (Mariae Zone) near Weymouth.- *Proceedings of the Dorset Natural History and Archaeological Society*, Dorchester, vol. 121, p. 77-100.
- DARDEAU G., MARCHAND D. & FORTWENGLER D. (1994).- Tectonique syn-sédimentaire et variations du niveau marin pendant le dépôt de la formation des Terres noires (Callovien supérieur - Oxfordien moyen ; Bassin du Sud-Est, France).- *Comptes-Rendus de l'Académie des Sciences de Paris*, (Série II), vol. 319, p. 559-565.
- DARDEAU G. & MARCHAND D. (1979).- Les influences mésogéennes et boréales dans le Dogger et le Malm (Oxfordien) des Alpes-Maritimes.- *7^e Réunion annuelle des Sciences de la Terre*, Lyon, p. 144.
- FORTWENGLER D. (1989).- Les "Terres noires" d'âge Callovien supérieur à Oxfordien moyen des chaînes sub-alpines du Sud (Diois, Baronnies, Dévoluy) : nouvelles données bio-

- stratigraphiques.- *Comptes-Rendus de l'Académie des Sciences de Paris*, (Série II), vol. 308, p. 531-536.
- FORTWENGLER D. & MARCHAND D. (1994a).- Nouvelles unités biochronologiques de la zone à *Mariae* (Oxfordien inférieur).- *Géobios*, Villeurbanne, Mémoire spécial 17, p. 203-209.
- FORTWENGLER D. & MARCHAND D. (1994b).- The Callovian-Oxfordian Boundary in the Basin of South of France. *In*: ATROPS F. (ed.), 4th Oxfordian and Kimmeridgian working groups meeting in the South-Eastern France Basin.- Guidebook, Lyon, p. 24-26.
- FORTWENGLER D. & MARCHAND D. (1994c).- The Savournon section: Upper Callovian (Lamberti zone) to Lower Oxfordian (*Mariae* zone) under "Terres Noires" facies. *In*: ATROPS F. (ed.), 4th Oxfordian and Kimmeridgian working groups meeting in the South-Eastern France Basin.- Guidebook, Lyon, p. 95-99.
- FORTWENGLER D. & MARCHAND D. (1994d).- The Thuoux section: Callovian-Oxfordian boundary (Lamberti to *Mariae* zone) under "Terres Noires" facies. *In*: ATROPS F. (ed.), 4th Oxfordian and Kimmeridgian working groups meeting in the South-Eastern France Basin.- Guidebook, Lyon, p. 103-106.
- FORTWENGLER D., MARCHAND D. & BONNOT A. (1997).- Ammonites et limite Callovien-Oxfordien dans les "Terres Noires" du Diois (Bassin du Sud-Est, France) : exemples des coupes de Thuoux et Savournon.- *Géobios*, Villeurbanne, vol. 30, p. 519-540.
- GULYAEV D.B., KISELEV D.N. & ROGOV M.A. (2002).- Biostratigraphy of the Upper Boreal Bathonian and Callovian of European Russia.- 6th International Symposium on the Jurassic System, Palermo, Abstract, p. 81-82.
- GYGI R.A. (1990).- The Oxfordian ammonite succession near Liesberg BE and Péry BE, northern Switzerland.- *Eclogae geologicae Helvetica*, Basel, vol. 83, p. 177-199.
- HILLEBRANDT A. & GROSCHKE M. (1995).- Ammoniten aus dem Callovium/Oxfordium-Grenzbe- reich von Nordchile.- *Berliner Geowissen- schaft Abhandlungen A*, vol. 169, p. 1-40.
- JARDAT R. (2010).- The evolution of ammonite associations during the Early Oxfordian (*Mariae* and *Cordatum* zones) in the Jura area (Eastern France).- *Carnets de Géologie [Notebooks on Geology]*, Brest, Article 2010/07 (CG2010_A07), 15 p.
- JEANNET A. (1955).- Die Eisen- und Manganerze der Schweiz. Stratigraphie und Palaeontologie des oolithischen Eisenerzlagers von *Herz- nach* und seiner Umgebund.- *Beiträge zur Geologie der Schweiz*, Bern, (Geotechnische Serie), Lieferung XIII, Bd. 5, 238 p. (107 Taf.)
- KNIAZEV V.G. (1975).- Ammonites and zonal stratigraphy of the Lower Oxfordian of North Siberia.- *Trudy Institut Geologiya y Geofisika Akademiyi Nauk SSSR Sibirskikh Otdel'nykh*, Novosibirsk, vol. 275, 139 p. [in Russian]
- KISELEV D.N. & ROGOV M.A. (2004).- Preliminary report on the Callovian/ Oxfordian boundary in the Central Russia.- 32nd International Geological Congress, Abstract vol. 1 (177-19), p. 824.
- KISELEV D.N. & ROGOV M. (2005).- Infrazonal stratigraphy and ammonites of the Middle-Upper Jurassic boundary beds of the European Russia (in Russian). *In*: ZAKHAROV V.A., ROGOV M.A. & DZYUBA O.S. (eds.), Materials of the first All-Russian Meeting "Jurassic System of Russia: problems of stratigraphy and paleogeography".- Moscow: GIN RAS, p. 128-134.
- KISELEV D.N., ROGOV M.A., GUZHIKOV A., PIMENOV M., TESAKOVA E. & DZYUBA O. (2006).- Dubki (Saratov region, Russia): the reference section for the Callovian/Oxfordian boundary.- Proceedings of the 7th international Symposium on Jurassic Stratigraphy, Krakow (2006), Abstract vol., p. 36-38.
- LANGE W. (1973).- Ammoniten und Ostreen (Biostratigraphie, Ökologie, Zoogeographie) des Callovium/Oxfordium-Grenzbereichs im Wiehengebirge.- *Münstersche Forschungen zur Geologie und Paläontologie*, vol. 27, 209 p. (25 pls.)
- MAIRE V. (1938).- Contribution à la connaissance des Cardioceratidés.- *Mémoires de la Société géologique de France*, Paris, (nouvelle série), n° 34, 134 p. (20 pls.)
- MARCHAND D. (1979).- Un nouvel horizon paléontologique : l'horizon à *Paucicostatum* (Oxfordien inférieur, zone à *Mariae*, base de la sous-zone à *Scarburgense*).- *Comptes-Rendus sommaires de la Société géologique de France*, vol. 3, p. 122-124.
- MARCHAND D. (1984).- Ammonites et paléoenvironnements : une nouvelle approche.- *Géobios*, Villeurbanne, Mémoire spécial 8, p. 101-107.
- MARCHAND D. (1986).- L'évolution des Cardioceratinae d'Europe occidentale dans leur contexte paléobiogéographique (Callovien supérieur – Oxfordien moyen).- Thèse de Doctorat, Université de Bourgogne, Dijon, 395 p.
- MARCHAND D. & DARDEAU G. (1979).- Colonisations faunistiques dans l'Oxfordien inférieur d'Europe occidentale. Exemple pris chez les Ammonoidés.- 7^e Réunion annuelle des Sciences de la Terre, Lyon, p. 311.
- MARCHAND D., FORTWENGLER D., DARDEAU G., GRACIANSKY P.C. de & JACQUIN T. (1990).- Les peuplements d'ammonites du Bathonien supérieur à l'Oxfordien moyen dans les Baronies (Bassin du Sud-Est, France) : comparaisons avec la plate-forme nord-européenne.- *Bulletin des Centres de Recherches Exploration-Production elf aquitaine*, Pau, vol. 14, n° 2, p. 465-479.
- MARCHAND D., GYGI R. A., BONNOT A. & FORTWENGLER D. (2000).- Les ammonites du Callovien

- terminal (zone à Lamberti) et de l'Oxfordien basal (zone à Mariae) d'Argovie (Suisse septentrionale).- *Revue Paléobiologique*, Genève, vol. 19, n° 1, p. 179-189.
- MELÉNDEZ G. (1996).- Oxfordian Working Group.- *International Subcommission on Jurassic Stratigraphy, Newsletter*, vol. 5, p. 29
- MELÉNDEZ G. (2003).- Oxfordian Working Group.- *International Subcommission on Jurassic Stratigraphy, Newsletter*, vol. 30, p. 16-18.
- MELÉNDEZ G. (2004).- Oxfordian Working Group.- *International Subcommission on Jurassic Stratigraphy, Newsletter*, vol. 31, p. 9-11.
- MELÉNDEZ G. (2006).- Oxfordian Working Group.- *International Subcommission on Jurassic Stratigraphy, Newsletter*, vol. 33, p. 16-19.
- MELÉNDEZ G., ATROPS F. & PAGE K.N. (2007).- The cardioceratid succession and the recognition of the Callovian-Oxfordian boundary at Savournon (SE France).- XXIII^a Jornadas de la Sociedad Española de Paleontología, Caravaca de la Cruz, 2007, Libro de resúmenes, p. 135-136.
- MORTON N. & HUDSON J.D. (1995).- Field guide to the Jurassic of the Isles of Raasay and Skye, Inner Hebrides, NW Scotland. In: TAYLOR P. D. (ed.), Field geology of the British Jurassic.- The Geological Society, London, p. 209-280.
- PAGE K.N. (1994a).- A review of the suitability of key British Callovian-Oxfordian and Oxfordian-Kimmeridgian sites as GSSP for stage boundaries (Abstract). In: ATROPS F. (ed.), 4th Oxfordian and Kimmeridgian working groups meeting in the South-Eastern France Basin.- Guidebook, Lyon, p. 15-16.
- PAGE K.N. (1994b).- The Callovian-Oxfordian boundary in Britain: a review of key sections and their correlation with the proposal Global Stratotype Section and Point for the Oxfordian in Haute Provence, France.- *Rivista Italiana di Paleontologia e Stratigrafia*, Milano, vol. 110, p. 201-208.
- PAGE K.N., MELÉNDEZ G., HART M.B., PRICE G.D., WRIGHT J.K., BOWN P. & BELLO J. (2006).- Integrated stratigraphical study of the candidate Oxfordian Global Stratotype Section and Point (GSSP) at Redcliff Point, Weymouth, Dorset, UK.- *Volumina Jurassica*, Warsaw, vol. 6, p. 1-13.
- PAGE K.N., MELÉNDEZ G. & WRIGHT J.K. (2009a).- The ammonite faunas of the Callovian-Oxfordian boundary interval in Europe and their relevance to the establishment of an Oxfordian GSSP.- *Volumina Jurassica*, Warsaw, vol. 7, p. 89-99.
- PAGE K.N., MELÉNDEZ G., HART M.B., PRICE G.D., WRIGHT J.K., BOWN P. & BELLO J. (2009b).- Integrated stratigraphical study of the candidate Oxfordian Global Stratotype Section and Point (GSSP) at Redcliff Point, Weymouth, Dorset, UK.- *Volumina Jurassica*, Warsaw, vol. 7, p. 101-111.
- PARENT H. (1998).- Upper Callovian to upper Oxfordian Ammonite Biostratigraphy of the transect Chacay Melehue-Sierra de Reyes, Argentina.- *Cuadernos de Geología Ibérica*, Madrid, vol. 24, p. 261-275.
- PARENT H. (2006).- Oxfordian and late Callovian ammonite faunas and biostratigraphy of the Neuquén-Mendoza and Tarapaca basins (Jurassic, Ammonoidea, Western South-America).- *Boletín del Instituto de Fisiografía y Geología*, Rosario, vol. 76, n° 1-2, p. 1-70.
- POULSEN N.E. & JUTSON D. (1996).- Dinoflagellate cysts from two potential candidates for the Oxfordian stage basal boundary stratotype (GSSP), south-eastern France - a preliminary review.- *Jurassic Microfossil Group, Newsletter*, Copenhagen, vol. 5, p. 4-14.
- QUEREILHAC P. (2009).- La Sous-Famille des Taramelliceratinae (Ammonitina, Haploceratoidea, Oppeliidae) de l'Oxfordien moyen et supérieur (Zone à Plicatilis, Sous-Zone à Vertébrale - Zone à Bimammatum, Sous-Zone à Berrense) du Nord de la Vienne, France (Province subméditerranéenne).- *Carnets de Géologie [Notebooks on Geology]*, Brest, Mémoire 2009/02 (CG2009_M02), 101 p.
- REMANE J., BASSETT M.G., COWIE J.W., GOHRBAND K.H., LANE H.R., MICHELSEN O. & WANG NAIWEN (1996).- Revised guidelines for the establishment of global chronostratigraphic standards by the International Commission on Stratigraphy (ICS).- *Episodes*, Ottawa, vol. 19, p. 77-81.
- REESIDE J.B. Jr. (1919).- Some American Jurassic Ammonites of the Genera *Quenstedticerias*, *Cardioceras* and *Amoeboceras*, Family Cardioceratidae.- *United State Geological Survey, Professional Papers*, Washington, vol. 118, 64 p. (24 pls.)
- ROGOV M.A. & EGOROV E.U. (2003).- Polymorphism in the some Early Oxfordian oppeliids (Ammonoidea) of the Russian Platform. In: BOGDANOV N.A., VASIL'eva T.I., VERBITSKY V.E. et al. (eds.), Modern questions of geology.- Materials of the 3rd Lectures in Memory of YANSHINE, Moscow, vol. 26-28, p. 245-248.
- SYKES R.M. (1975).- The stratigraphy of the Callovian and Oxfordian stages (Middle to Upper Jurassic) in northern Scotland.- *Scottish Journal of Geology*, Edinburgh, vol. 11, p. 51-78.
- TESAKOVA E.M. (2008).- Late Callovian and Early Oxfordian ostracods from the Dubki section (Saratov area, Russia): implications for stratigraphy, paleoecology, eustatic cycles and palaeobiogeography.- *Neues Jahrbuch für Geologie und Paläontologie, Abhandlungen*, Stuttgart, vol. 249, p. 25-45.
- THIERRY J., CARIOU E., ELMIS S., MANGOLD C., MARCHAND D. & RIOULT M. (1997).- Callovien. In: CARIOU E. & HANTZPERGUE P. (coord.), Biostratigraphie du Jurassique ouest européen et méditerranéen : zonations parallèles et

- distribution des invertébrés et microfossiles.- *Bulletin des Centres de Recherches Exploration-Production elf aquitaine*, Pau, Mémoire 17, p. 63-78 & 140-143.
- THIERRY J., MARCHAND D., FORWENGLER D., BONNOT A. & JARDAT R. (2006).- Les ammonites du Callovo-Oxfordien des sondages ANDRA dans l'Est du Bassin de Paris : synthèse bio-chrostratigraphique, intérêts paléoécologique et paléobio-géographique.- *Comptes-Rendus des Geosciences*, Paris, vol. 338, p. 834-853.
- TURNER J. (1966).- The Oxford Clay of Skye, Scalpay and Eigg.- *Scottish Journal of Geology*, Edinburgh, vol. 2, p. 243-252.
- VIDIER J.P., MARCHAND D., BONNOT A. & FORWENGLER D. (1993).- Le Callovien et l'Oxfordien *p.p.* du Boulonnais : nouvelles données biostratigraphiques.- *Acta Geologica Polonica*, Warszawa, vol. 43, n° 3-4, p. 169-182.